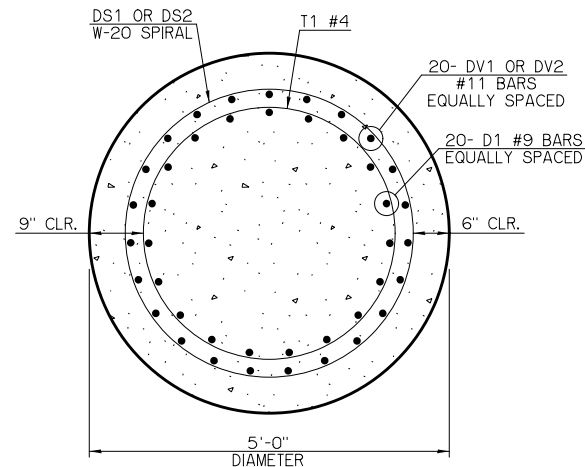
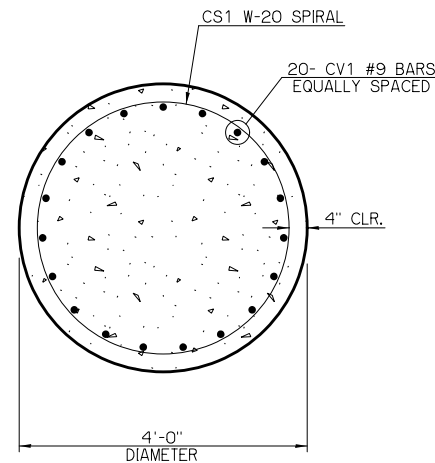
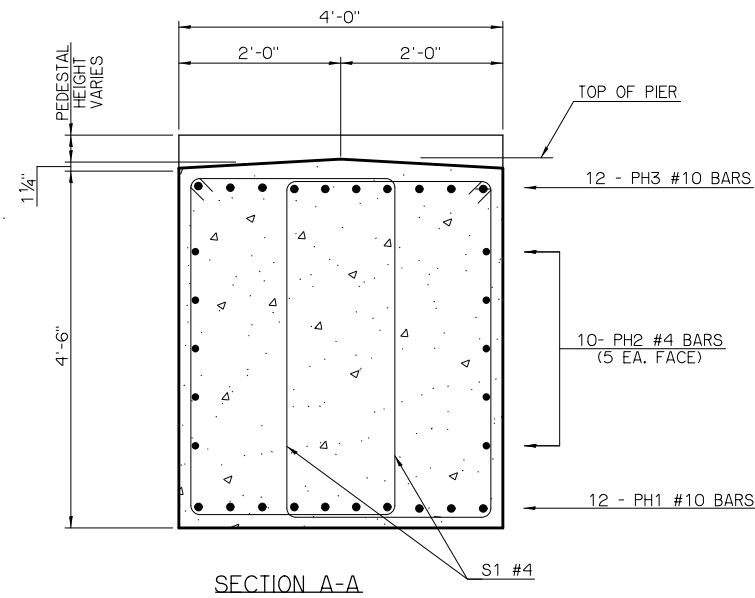
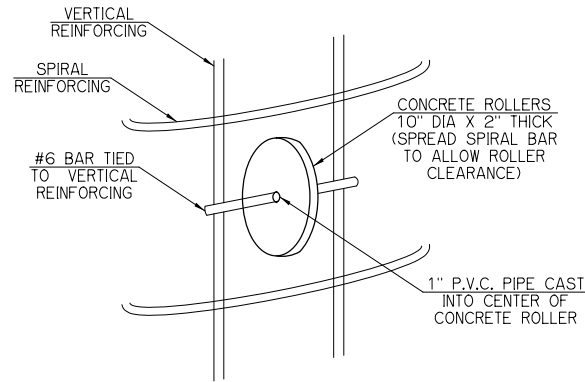


REV. NO.	DESCRIPTION	REVISIONS	DATE

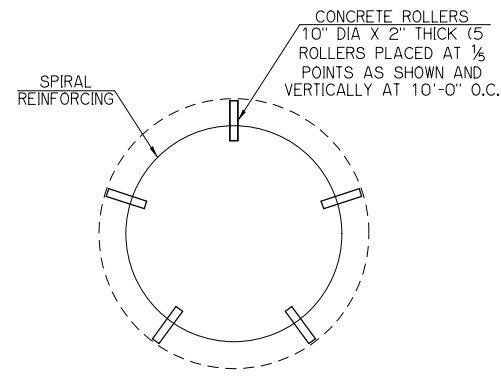


PIER NO. 1 BAR LIST				
MARK	SIZE	NO.	FORM	LENGTH
PLAIN REINFORCING				
[1]	DV1	#11	40 STR.	23'-6"
[2]	CS1	W-20	2 BENT	295'-4"
[1][2]	DS1	W-20	2 BENT	629'-0"
[1]	T1	#4	12 BENT	13'-0"
EPOXY COATED REINFORCING				
[1]	CV1	#9	40 STR.	17'-2"
	D1	#9	40 STR.	14'-3"
	P1	#4	24 BENT	6'-4"
	P2	#4	20 BENT	7'-0"
	PH1	#10	12 STR.	38'-10"
	PH2	#4	10 STR.	38'-10"
	PH3	#10	12 BENT	41'-8"
	PU1	#5	14 BENT	5'-7"
	S1	#4	108 BENT	14'-5"

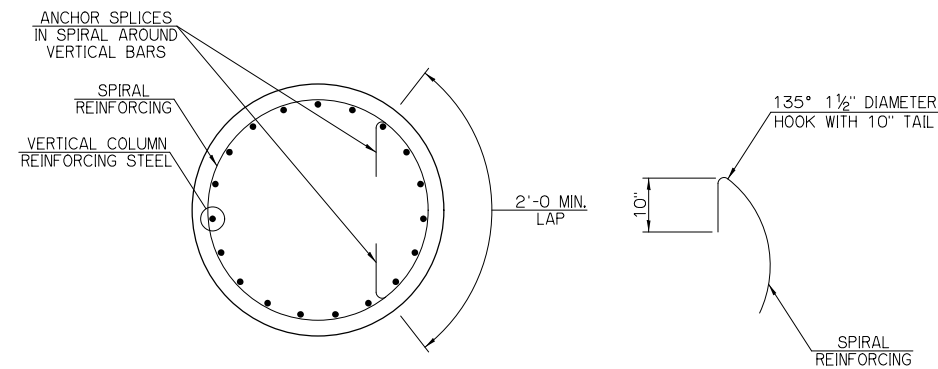
- [1] REINFORCING INCLUDED IN PRICE BID PER L.F. OF DRILLED SHAFT. PROJECTION LENGTH OF D1 BARS SHALL NOT BE CONSIDERED ADDITIONAL PAY LENGTH FOR DRILLED SHAFT
- [2] LENGTH SHOWN DOES NOT ACCOUNT FOR SPLICES. CONTRACTOR MAY ADD SPLICES AS NECESSARY BUT PAYMENT WILL NOT BE MADE FOR EXTRA LENGTH REQUIRED FOR SPLICES. ADD 3'-8" TO SPIRAL LENGTH FOR EACH SPLICE.



DETAIL OF ROLLER INSTALLATION
 CONCRETE USED IN THE CONCRETE ROLLERS SHALL HAVE A MINIMUM 28 DAY COMPRESSIVE STRENGTH OF 4,000 PSI. SLAB BOLSTER, HIGH CHAIRS, AND PLASTIC ROLLERS SHALL NOT BE SUBSTITUTED FOR THE CONCRETE ROLLERS.



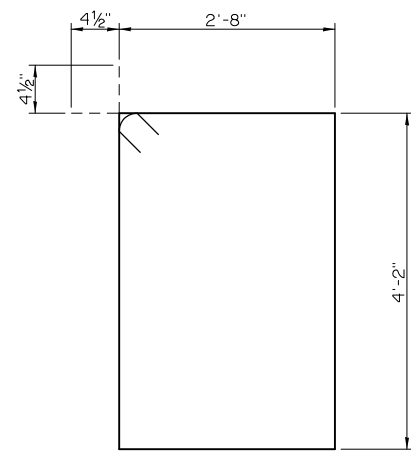
DETAIL OF ROLLER PLACEMENT



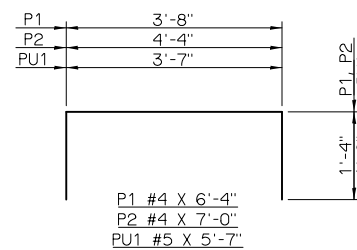
SPIRAL REINFORCING SPLICE DETAIL
 SPIRAL BARS SHALL CONFORM TO AASHTO M32. SPIRAL BAR LENGTH DOES NOT INCLUDE LAP. IF LAP IS REQUIRED, THE LENGTH OF THE LAP SHALL BE AS SHOWN.

PIER NO. 2 BAR LIST				
MARK	SIZE	NO.	FORM	LENGTH
PLAIN REINFORCING				
[1]	DV2	#11	40 STR.	30'-6"
[2]	CS1	W-20	2 BENT	295'-4"
[1][2]	DS2	W-20	2 BENT	805'-0"
[1]	T1	#4	12 BENT	13'-0"
EPOXY COATED REINFORCING				
[1]	CV1	#9	40 STR.	17'-2"
	D1	#9	40 STR.	14'-3"
	P1	#4	24 BENT	6'-4"
	P2	#4	20 BENT	7'-0"
	PH1	#10	12 STR.	38'-10"
	PH2	#4	10 STR.	38'-10"
	PH3	#10	12 BENT	41'-8"
	PU1	#5	14 BENT	5'-7"
	S1	#4	108 BENT	14'-5"

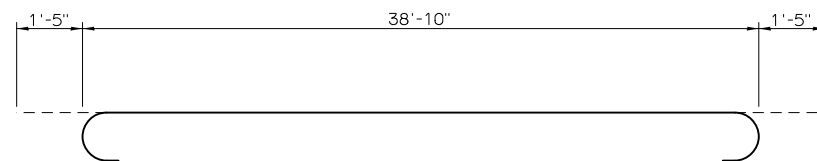
- [1] REINFORCING INCLUDED IN PRICE BID PER L.F. OF DRILLED SHAFT. PROJECTION LENGTH OF D1 BARS SHALL NOT BE CONSIDERED ADDITIONAL PAY LENGTH FOR DRILLED SHAFT
- [2] LENGTH SHOWN DOES NOT ACCOUNT FOR SPLICES. CONTRACTOR MAY ADD SPLICES AS NECESSARY BUT PAYMENT WILL NOT BE MADE FOR EXTRA LENGTH REQUIRED FOR SPLICES. ADD 3'-8" TO SPIRAL LENGTH FOR EACH SPLICE.



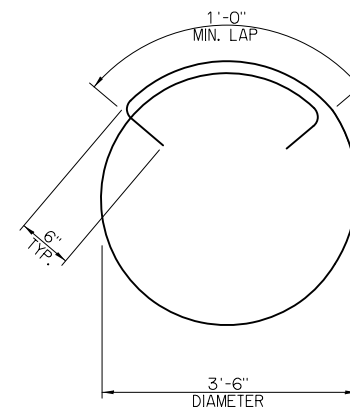
S1 #4 X 14'-5"



P1 #4 X 6'-4"
P2 #4 X 7'-0"
PU1 #5 X 5'-7"



PH3 #10 X 41'-8"



T1 #4 X 13'-0"

DETAILS OF BENT REINFORCING

PIER QUANTITIES				
DESCRIPTION	UNIT	PIER NO. 1	PIER NO. 2	TOTAL
CLASS A CONCRETE	CY	39.6	39.6	79.2
REINFORCING STEEL	LB	400.0	400.0	800.0
EPOXY COATED REINFORCING STEEL	LB	8,070.0	8,070.0	16,140.0
WATER REPELLENT (VISUALLY INSPECTED)	SY	64.0	64.0	128.0
DRILLED SHAFTS 60" DIAMETER	LF	48.0	62.0	110.0
CROSSHOLE SONIC LOGGING	EA	1.0		1.0

SH-99 OVER BIRCH CREEK OSAGE COUNTY

Design: RJM 5/12
 Detail: RJM 5/12
 Check: SBH 5/12
 Squad:
 Engr:

NO. 5730 1228X NBI 30315

STATE OF OKLAHOMA DEPARTMENT OF TRANSPORTATION
 JOB PIECE NO. 24261(04) SHEET NO. 117